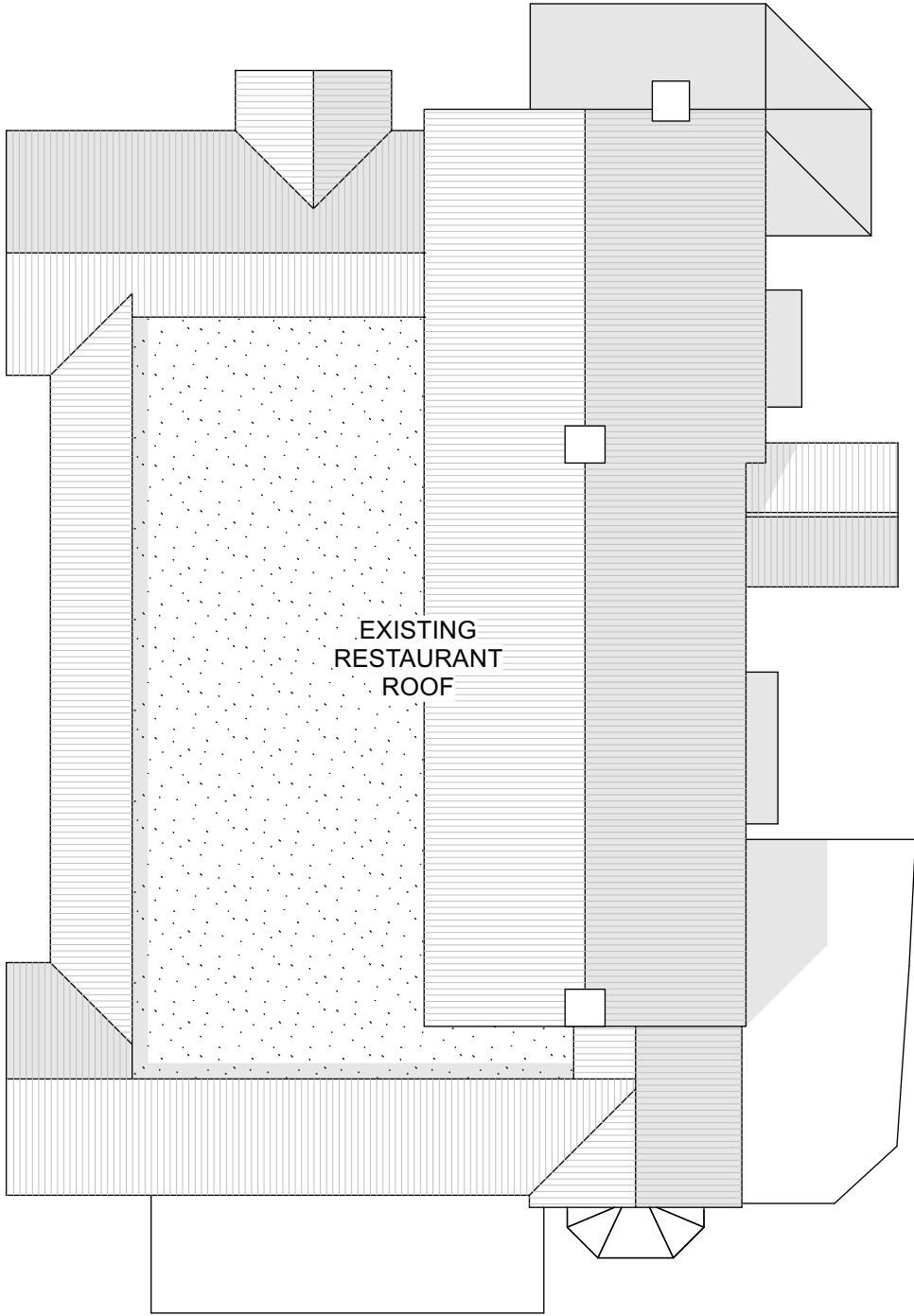


This drawing is the copyright of Axiom Architects. It is for planning application purposes only and may not be reproduced in whole or in part without permission. Drawings lodged for planning approval may be reproduced by the Planning Authority in accordance with the 'Copyright (Material Open to Public Inspection) (Marking of Copies of Plans and Drawings) Order 1990' and must carry the relevant copyright restriction note. Scaling from this drawing should only be carried out from a print at the scale and size specified within the title block. Responsibility for ensuring correct size reproduction remains with the reader.

Legend:

Existing Restaurant & BOH

Existing Premier Inn



01 Existing Second Floor Plan  
Scale: 1:200

Rev	Date	Description	By	Chk
-----	------	-------------	----	-----

AXIOM

ARCHITECTS

1 Brooklands Yard Southover High Street Lewes East Sussex BN7 1HU  
Tel. 01273 479434 [www.axiomarchitects.co.uk](http://www.axiomarchitects.co.uk)

Client  
**WHITBREAD GROUP PLC**

Project  
LLANELLI CENTRAL EAST PREMIER INN  
LLANDAFEN ROAD, SA14 9BD

Drawing  
**Existing Second Floor Plan**

Scale	Date	Drawn	Checked
1:200 @A3	04/07/24	AGO	AB
Drawing No.		Revision	

**6127-P- 102**  
Status  
**PLANNING**

