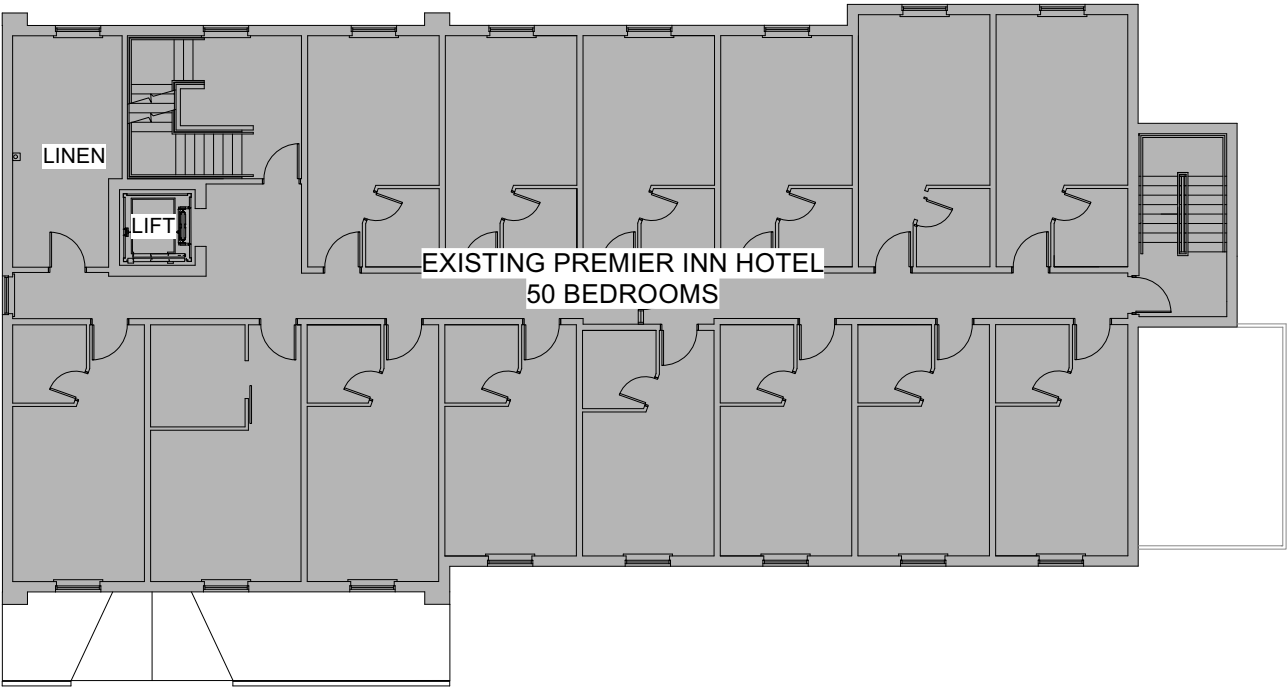
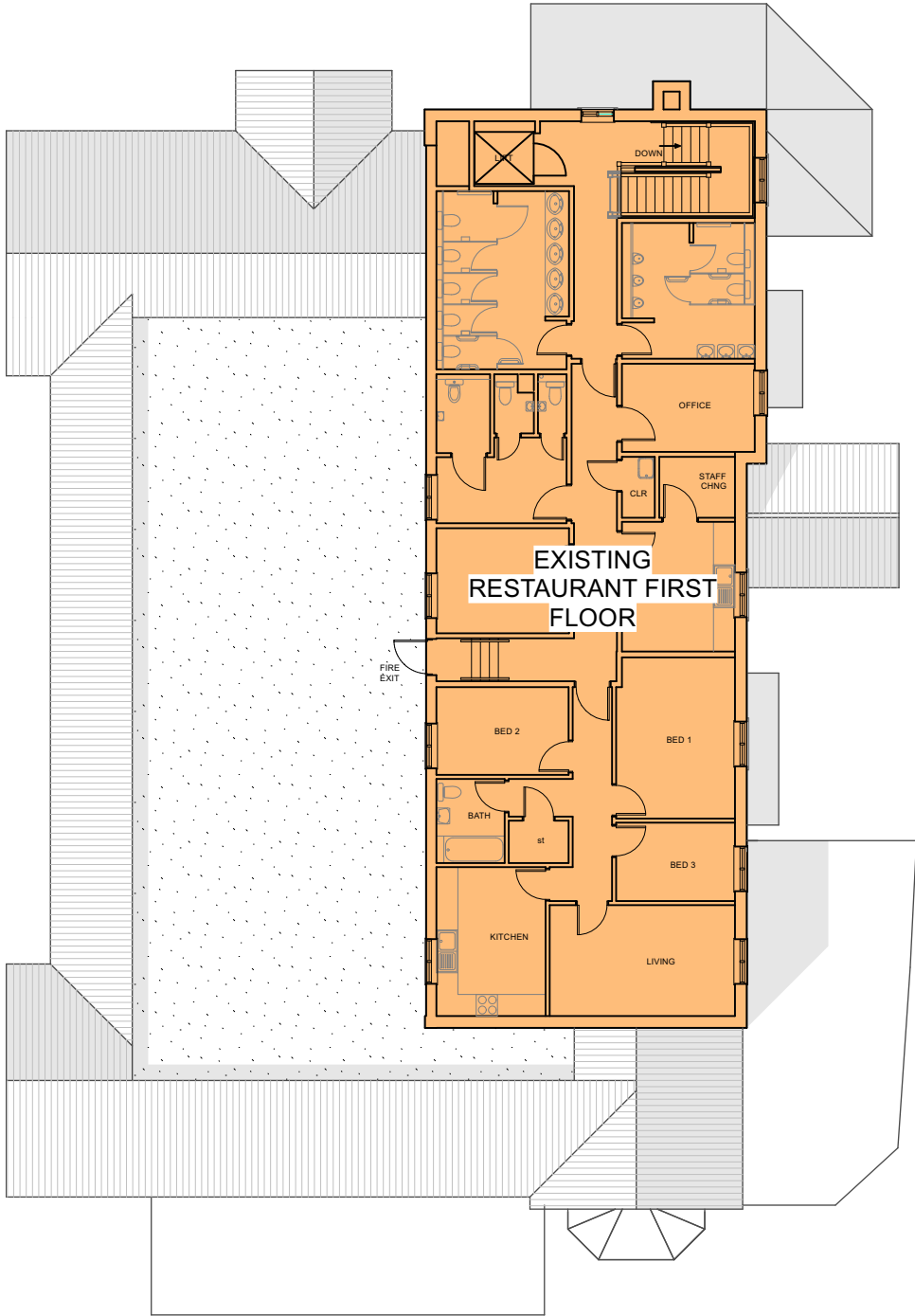


This drawing is the copyright of Axiom Architects. It is for planning application purposes only and may not be reproduced in whole or in part without permission. Drawings lodged for planning approval may be reproduced by the Planning Authority in accordance with the 'Copyright (Material Open to Public Inspection) (Marking of Copies of Plans and Drawings) Order 1990' and must carry the relevant copyright restriction note. Scaling from this drawing should only be carried out from a print at the scale and size specified within the title block. Responsibility for ensuring correct size reproduction remains with the reader.

Legend:

Existing Restaurant & BOH

Existing Premier Inn



01 Existing First Floor Plan
Scale: 1:200

A	29/07/24	Planning Update	AW	AB
Rev	Date	Description	By	Chk

AXIOM

ARCHITECTS

1 Brooklands Yard Southover High Street Lewes East Sussex BN7 1HU
Tel. 01273 479434 www.axiomarchitects.co.uk

Client
WHITBREAD GROUP PLC

Project
LLANELLI CENTRAL EAST PREMIER INN
LLANDAFEN ROAD, SA14 9BD

Drawing
Existing First Floor Plan

Scale	Date	Drawn	Checked
1:200 @ A3	04/07/24	AGO	AB
Drawing No.			Revision
6127-P-	101	A	
Status PLANNING			

